



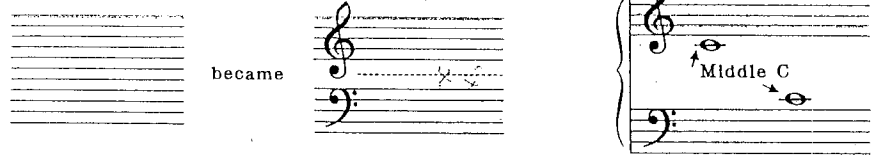
lesson 9

LEGER LINES

LEGER LINES are lines added above or below a staff.



In the early history of music, the Great Staff had eleven lines. The middle line was later removed, in order to make reading easier. Now, when that middle line (middle C) is needed, a short piece of the middle line is drawn and called a leger line.



Fill in the words that these notes spell.

Draw the notes that these words spell.



lesson 10

REVIEW OF GREAT STAFF



Draw the following notes found on the Great Staff.

3 different A's 3 different C's 4 different G's 3 different B's 4 different F's 3 different D's

Space B Line C Line E Space D Space F Line G

